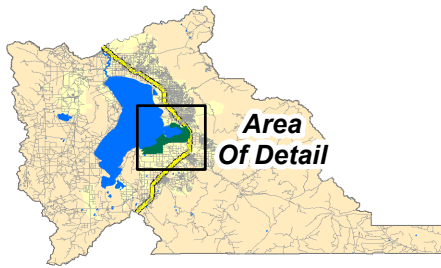
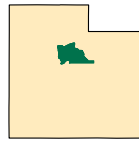


Utah County



Utah County, Utah

Aerial Adulthood Application Date:
July 13, 2023



Flight Line

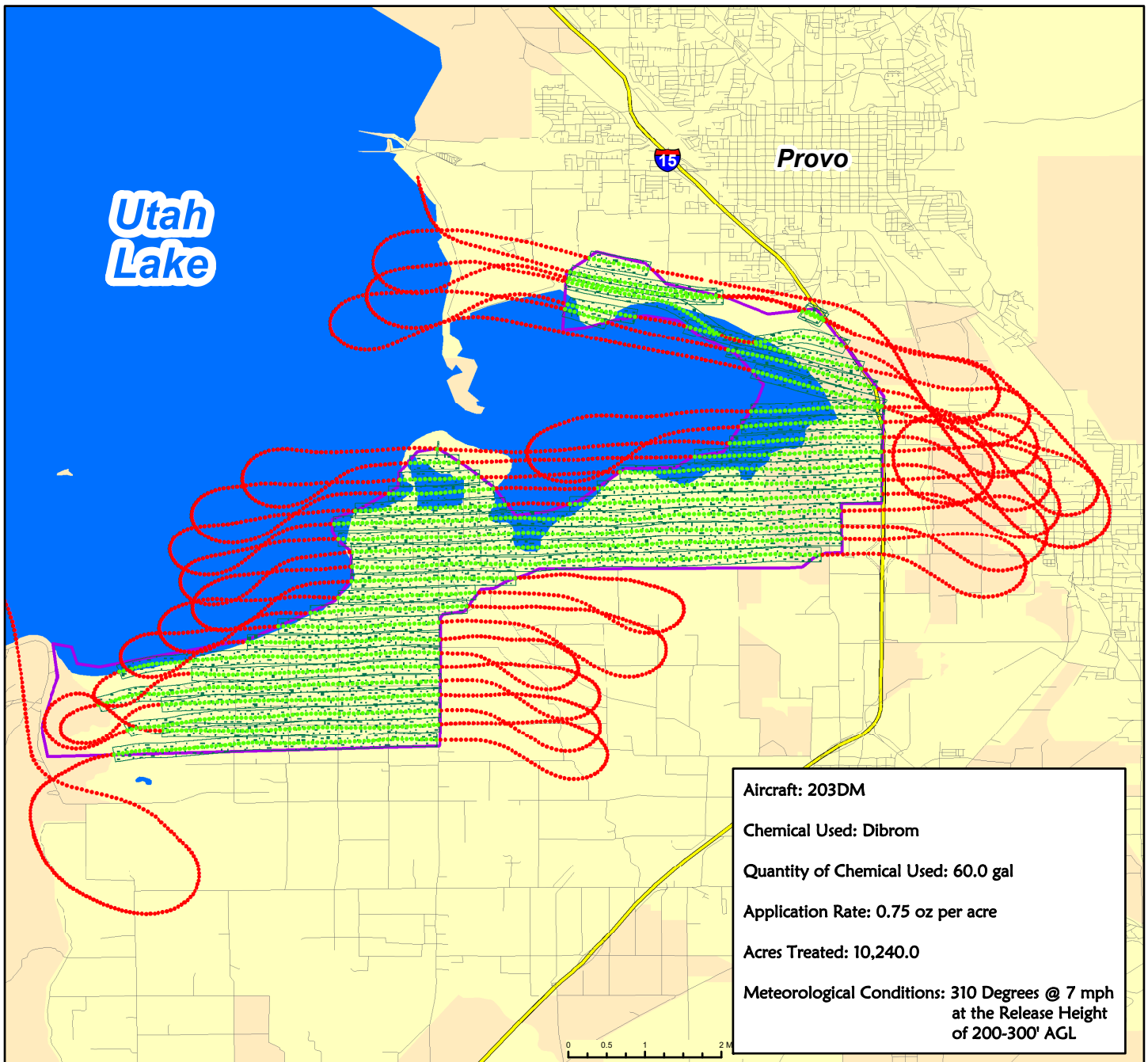
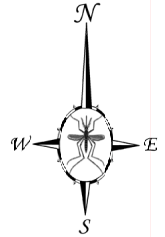
Sprayer Off

Sprayer On

Towers

Spray Deposition

Treatment Area



Aircraft: 203DM

Chemical Used: Dibrom

Quantity of Chemical Used: 60.0 gal

Application Rate: 0.75 oz per acre

Acres Treated: 10,240.0

Meteorological Conditions: 310 Degrees @ 7 mph
at the Release Height
of 200-300' AGL



VDCI
1320 Brookwood Dr., Suite H
Little Rock, AR 72202

These map products were developed for use by VDCI for its internal purposes only and were not designed or intended for general use by members of the public. VDCI makes no representation or warranty as to its accuracy, timeliness, or completeness, and in particular, its accuracy in labeling or displaying dimensions, contours, property boundaries, or placement or location of any map features thereon. © 2023 VDCI. All rights reserved.